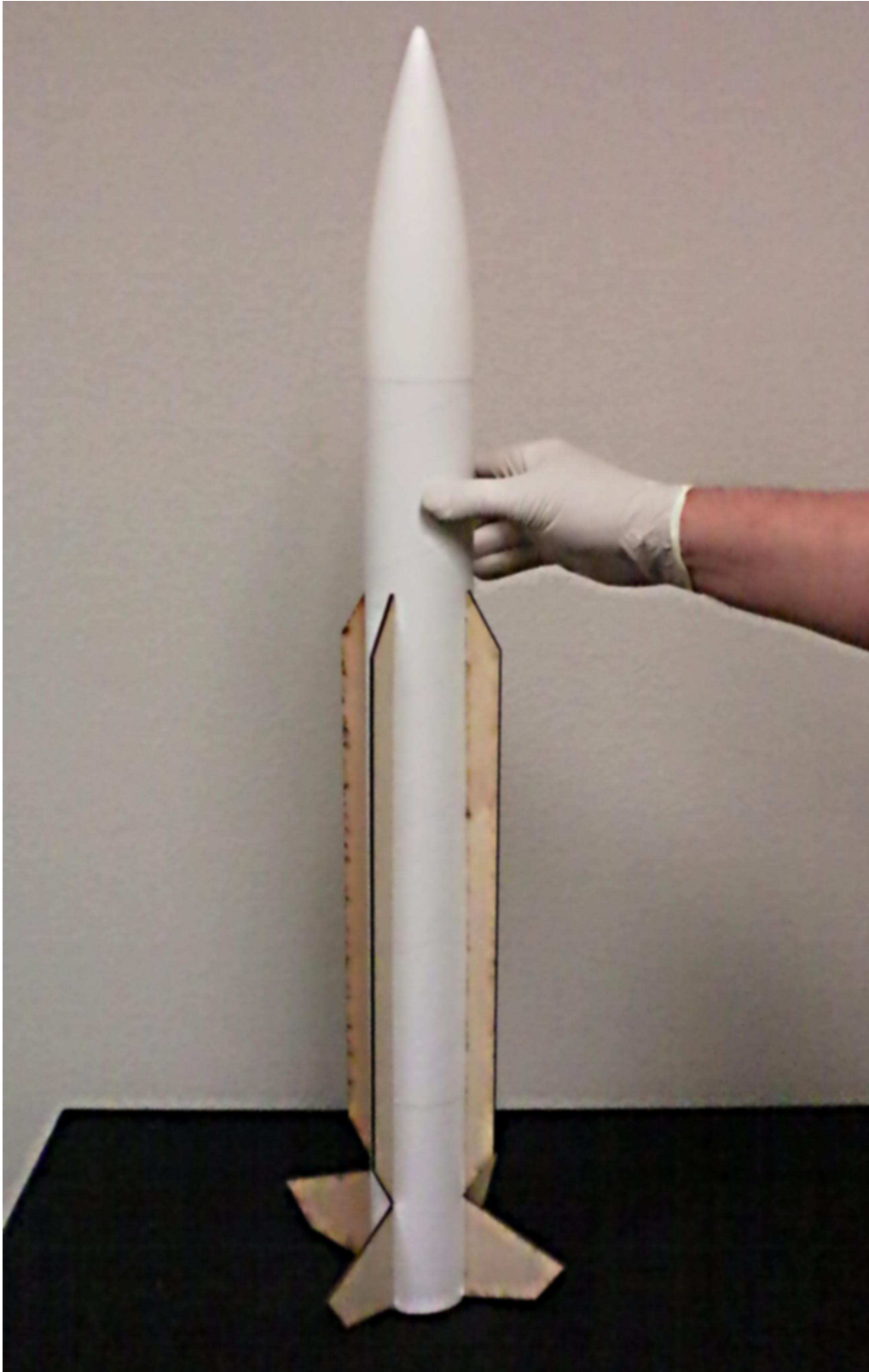


Expert Series 2.6 Rim-24 Tartar Assembly Instructions

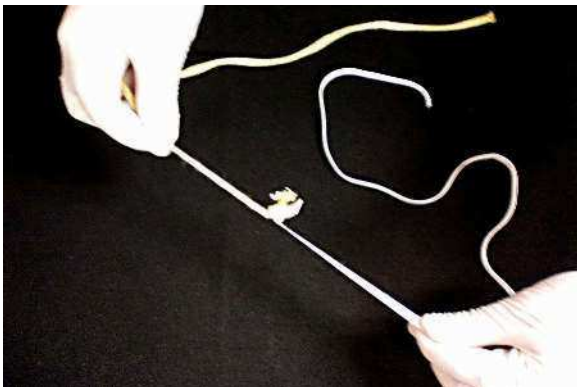


Shock Cord Preparation

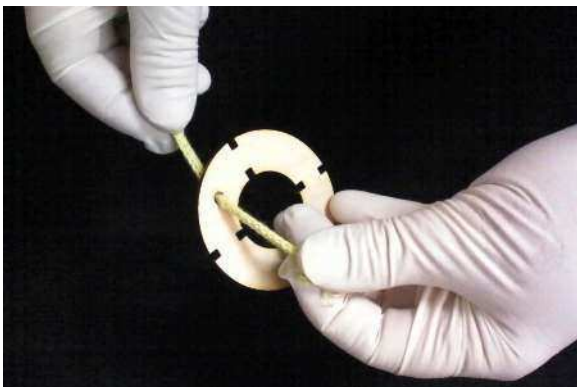
Step 1 - Tie the elastic shock cord to the Kevlar shock cord with one overhand knot.



Step 2 - Pull tight to check that the knot is secure



Step 3 - Pull the Kevlar cord through the hole in one centering ring.



Step 4 - Tie a single knot in the end of the Kevlar shock cord.



Step 5 - Pull the knot tight to secure the knot.

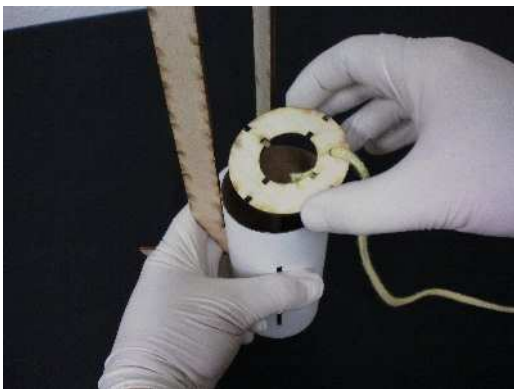


Fin Can Assembly

Step 1 - Insert the first fin into the fin can tube with the slot closest to the bottom. Do the same for the second fin.



Step 2 - Insert the forward centering ring with the shock cord knot facind down in the tube.



Step 3 - Adjust and lock the centering ring to the fins and hold in place.



Step 4 - Lift the corners of the centering ring to allow the last two fins to be inserted and lock all fins and the centering ring into place.



Step 5 - Insert the motor tube until flush with the table surface.

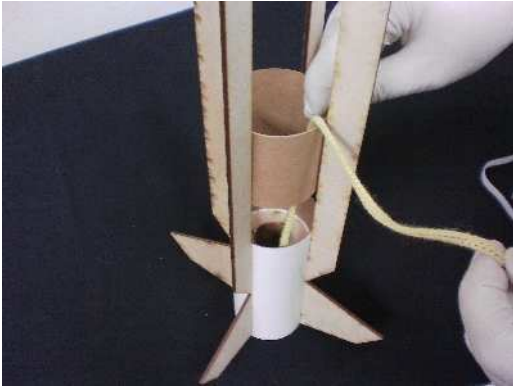


Step 6 - Apply a bead of glue around the centering ring where it contacts both the motor tube and the fin can tube.

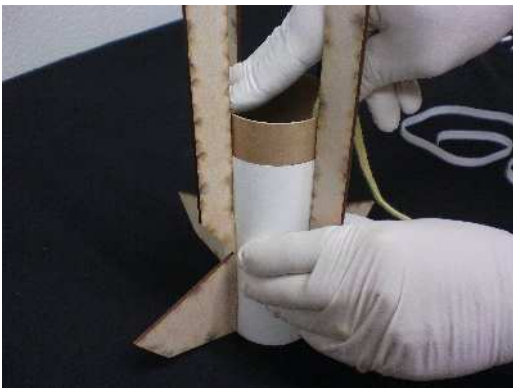


Fin Can Assembly Continued...

Step 7 - Insert the coupler into the fin can tube.



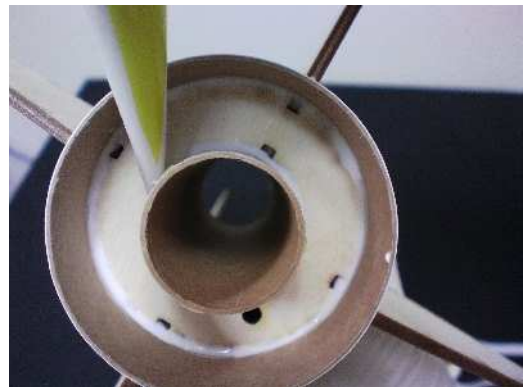
Step 8 - Push the coupler all the way in until it contacts the centering ring and the bead of glue. This will keep the fins and centering ring locked in.



Step 9 - Turn over the fin can and insert the aft centering ring and lock in place with the fins.



Step 10 - Apply a bead of glue where the aft centering ring contacts the motor tube and inside of the fin can tube.



Step 10 - Check that all fins and centering rings both forward and aft are locked in to each other.

Set aside to dry.

Main Tube Assembly

Step 1 - Insert the shock cord through the aft end of the main tube where marked with a tick mark as in step 4 to the right.



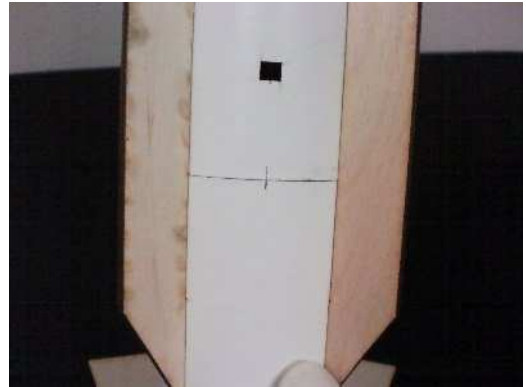
Step 2 Apply a bead of glue around the inside aft end about 1/2" from the aft end.



Step 3 - Insert the main tube into the fin can assembly.



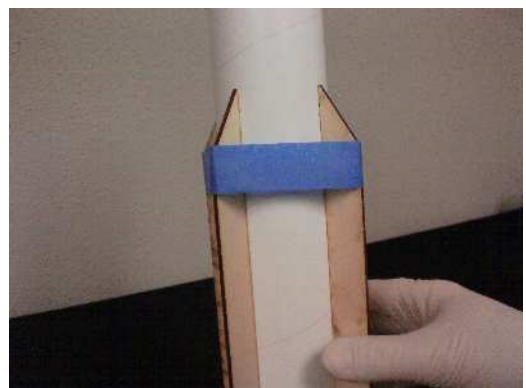
Step 4 Push the two assemblies together over the coupler with the tick marks on both tubes aligned.



Step 5 insert the fin tabs into the slots of the main tube.



Step 6 - Wrap masking tape around all 4 fins to hold the fins firmly into the slots and against the main tube.

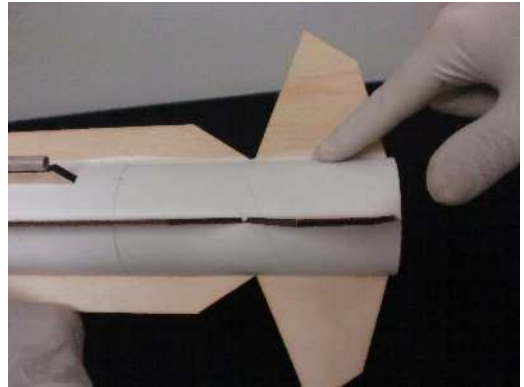


Main Tube Assembly Continued...

Step 1 - Apply a bead of glue along the length of fins where they intersect the main tube and fin can tubes. Do this for both sides of each fin.



Step 2 - Smooth out the glue at each fillet with a clean finger. Do this for both sides of each fin.

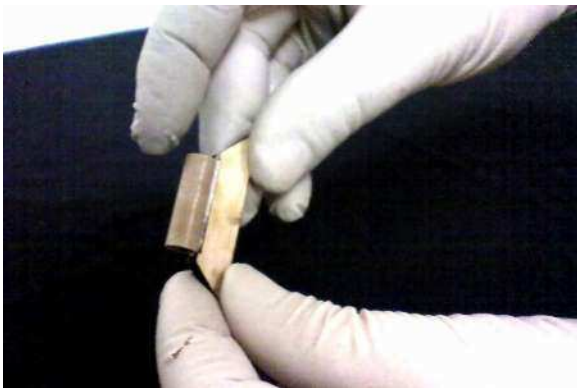


Launch Lug Assembly

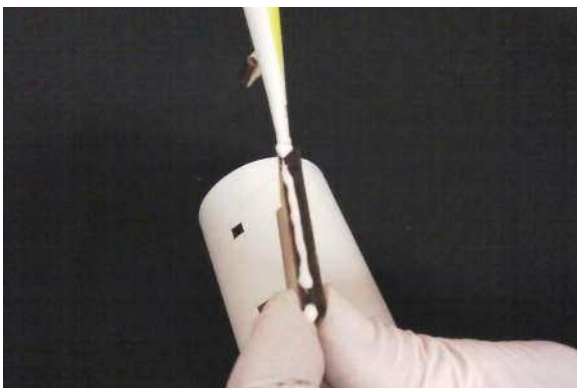
Step 1 - Apply a bead of glue on each standoff along the top shorter surface.



Step 2 - Attach a launch lug to each standoff between the raised tabs and align straight.



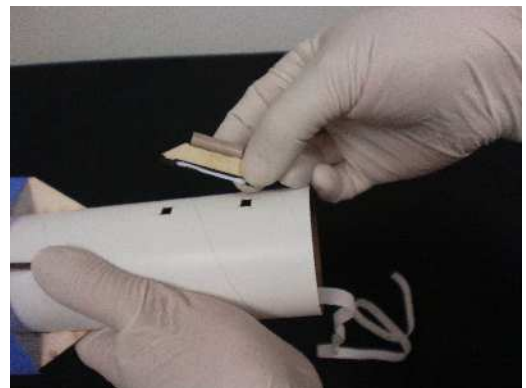
Step 3 - Apply glue to the longer bottom of each standoff.



Step 4 - Attach the aft launch lug and stand off pair to the main tube at the aft launch lug slots.



Step 5 - Attach the forward launch lug and stand off pair to the main tube at the forward launch lug slots.



Step 6 - Sight down the launch lug slots to check alignment and adjust if necessary.

Set aside to dry

Recovery System Assembly

Step 1 - Align the ends of the parachute at the shroud lines.



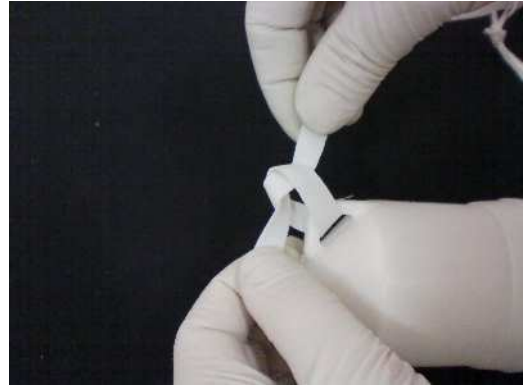
Step 2 - Pull straight and tie a single knot in the end of the shroud lines.



Step 3 - Pull the end of the shock cord through the loop at the end of the shroud lines.



Step 4 - Tie the shock cord to the nose cone with a double knot.



Step 5 - Fold the parachute and roll the shroud lines around the folded parachute.



Step 6 - Insert the parachute in the forward end of the body tube.



Recovery System Assembly Continued...

**Step 7 – Insert the nose cone in
to complete the assembly.**

